

AL CHISHTY ENGINEERING WORKS LLC



Al Chishty Engineering Works LLC



RAK

Al Chishty Engineering works LLC which is located in Ras Al Khaimah (RAK) was founded in 1988. Started as a small lathe shop, Al Chishty Engineering transformed to a modern engineering company with latest machineries and equipments and has one of the best and modern shop floor in the whole northern part of United Arab Emirates (UAE) and is an ISO certified company.

Our customers include both multinational and local companies: RAK ceramics, ADNOC, Brederoshaw, RAK cement are some of them. Stability and diversification throughout the history of Al Chishty Engineering have contributed to steady growth and has enabled us to attract a diversified staff of professional and dedicated employees, some of whom have been with us for more than 15 years.

Al Chishty Engineering believes in establishing long term, strategic relationship with its customers. We hold ourselves accountable for delivering quality results all the way from top to bottom to each member of an engagement. Customers are our most trusted proponents and ambassadors of goodwill. Al Chishty delivers superior value to all customers by leveraging its expertise providing technical solutions. Al Chishty has a track record of delivering quality assurance services to some of the best known organizations in the oil & gas, cement, ceramics, glass, mineral processing, plastic, heavy equipments and public sector verticals.





Our Specialties:

- 1) Auto Shop
- 2) CNC Lathe & Milling
- 3) Electroplating
- 4) Fabrication & Welding
- 5) Foundry
- 6) Conventional Machine Shop
- 7) Milling (All type of gears) & Shaper
- 8) Heavy equipments repair & Maintenance
- 9) Design & Analysis (FEA & CFD)



Design

- Auto Shop
- Conventional Machine Shop
- CNC Lathe & Milling
- Milling (Gears)

- Welding & Fabrication
- Heavy equipment repair & Maintenance

- Foundry
- Electroplating



Auto Section:

➤Crank Grinding

Al Chishty engineering works, can regrind all cranks up to 65" capacity, handling strokes to 8". Work includes welding, polishing and also true indexing of rod journals. Modern, state of the art technology gives the best results.

➤Line Boring

Line boring is the machining process that corrects the main line of the block . We at Al Chishty utilize this process because it is much more accurate rather than line honing an engine mainline and saves the block and actually cost less since there is no need for shorter timing chains.

➤Cylinder Heads

Valve Seat and Valves reconditioning, Valve Guide Repair and Replacement, Pressure Testing, Resurfacing, and Crack Repair.

➤Connecting Rods

Connecting Rod Reconditioning and Replacement, Balancing, Assembly of Pistons and Pins on Connecting Rods, Balancing.

➤Surface grinding

By use of rotary table and standard reciprocating table grinders we are able to tackle most forms of surface grinding.





CNC Lathe And Milling:

We have machining capabilities including but not limited to milling, turning, tapping etc.

Our state of the art CNC machining capabilities are the very best the industry has to offer. Our CNC machining services exceed today's high precision, tight tolerance machining requirements for machining a various variety of hard and heat treated materials.

Our team offers 3-dimensional cad-cam services, capable of transforming even the simplest sketch into a precision component. Whether it is reverse engineering or making it to a customer design, Al Chishty has done it all. Our experienced engineers and customer service staff can assist in helping you determine the most suitable CNC machining method for your material and application.

Our capabilities also include design and engineering for the oilfield industry.





Conventional Machining:

Although today is the era of the CNC machine, not every job can be performed on a CNC machine. There are applications when a conventional machine is the most efficient method. Such as the need for a one day turnaround, making only one part, or just an all around simple application.

Al Chishty Engineering uses industrial-sized lathe equipment capable of moving 92 inch diameter materials with up to 26 feet between centers.

The shop also has a large number of:

- Lathes – Large, medium and small Manual and CNC
- Mills - universal and radial
- Grinders - circular and surface
- Hydraulic press (200 tons capacity)
- Automatic saws
- Variety of drill machines
- Other support equipment





Milling (All type of gears)

Al Chishty Engineering offers custom gears and spline products in a wide variety of materials. We can manufacture top quality replacement gears for any conceivable industrial application. We have a full service firm with the capabilities to manufacture any size standard or metric gears. We offer the flexibility to manufacture gears complete to print, or through inverse engineering, our engineers are able to produce a precise clone of an existing gear without a blueprint or drawing, just supply your sample.

Some of the types of gears that are made to your specification:

- Spur gears
- Helical gears
- Internal gears
- Cluster gears
- Helical rack gears
- Face gears
- Worm Gears
- Hypoid gears
- Spiral Bevel gears
- Sprocket





Heavy equipment Repair & Maintenance

Crusher repair & Maintenance

Our wealth of experience in crusher repairs, our standardized and proven methods, our pointed knowledge of business and industry, and our broad, yet specialized skill base, allows us to supply you with outstanding value for quality repairs. Our work enables you to increase productivity, minimize your repair costs, and establish a long lasting relationship with a company that cares about your business. The following are just a few of the items we repair:

- Cone
- Jaw
- Impact
- Roll mills
- Portable mills
- Conveyors & Rollers
- Bearings
- Steel Shredders
- Punch Presses

Shutdown

We undertake shutdown maintenance job for process plants and assuring to carry out with all satisfaction in all respects within the stipulated time allowed.





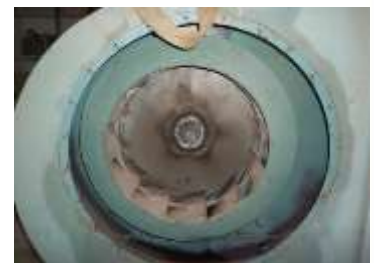
Heavy equipment Repair & Maintenance

Machine repair

Al Chishty Engineering works LLC's employees are experienced professionals who combine industry, process, and technical expertise with a strong work ethic, excellent skills, and a personal commitment to excellence. We perform repairs on most machinery related to crushers, including:

- Screens
- Pumps
- Gears
- Shafts
- Buckets

Our machine shop has superior quality equipment including a vertical boring mill, horizontal boring mill 8' x 18', and a 5 ton crane. We offer you a full spectrum of repair options ranging from balers to bearings - all with the same careful attention to detail.





Fabrication & Welding

Al Chishty Engineering have been serving the steel fabrication industry for over 10 years. We are centrally located and provide fabrication and welding services throughout UAE.

Through prompt service, immediate attention, high quality, and dedicated personnel we have become an industry leader. Depend upon Fabricating & Welding Corporation for all your plate or structural fabrication requirements from raw material to finished product.



We service all industries including

- Mechanical
- Structural
- Oil & Gas
- Cement factories
- Architectural
- Construction





Fabrication & Welding

Services:

- Custom plasma cutting
- Flame cutting
- Certified welding
- MIG/TIG welding
- Spray welding (Praxair TAFA)
- Punching
- Rolling
- Shearing
- Stainless steel fabrication
- Structural steel fabrication
- Erection
- Sheet metal works

Some of our Specialties:

- Car Parking Shed
- Silos
- Tanks
- Fencing (BS Standard)
- Steel structure
- Conveyors
- Form work
- Ducting
- Garbage chute
- Fire exit staircase





Foundry

Sand casting

We produce sand casting products for motorcycle, diesel engine, hydraulic components, water pump, and machinery.

The casting materials we work with include:

- **Gray cast Iron:** Gray iron is a common engineering alloy because of its relatively low cost and good machinability, which results from the graphite lubricating the cut and breaking up the chips. We are able to produce castings to your specifications up to 80 Kg.
- **Aluminum:** We can produce aluminum castings to your specifications, weighing from a few grams to 40 Kg. We utilize a variety of alloys to accommodate all of your casting needs.
- **Brass:** Al Chishty Engineering casts using several brass alloys including red and yellow brass. Brass castings are well suited for applications where properties such as durability, corrosion resistance and appearance are important. We are able to produce castings to your specifications up to 35Kg.





Foundry

Architectural casting

From fence sections to sconces, we cast a variety of architectural reproductions, often working from an original casting.

Our products include railings, gates, doors, lighting, fences, grilles, fixtures, minars etc. Alloys and processes include cast iron, aluminum & Brass.

Capabilities

We are ready to assist with your project from design and engineering, tooling production, casting, machining and various other finishing operations.

The following are the our Pledge of Excellence:

- ✓ Establish Customer Requirements - we'll acquaint ourselves with the end product and the customer expectations allowing us to use our experience to insure the proper processes are applied to reach the desired results.
- ✓ Sample Approval - all sample castings will pass a written approval process insuring agreement to the final product.
- ✓ Production Castings - all production castings will be supplied to meet your specific manufacturing schedule requirements





Electroplating & Buffing

Chroming

Chrome plating is a process that involves the electroplating of a thin veneer of chromium onto an underlying metal. Sometimes used for decorating purposes, chrome plating can also serve as a layer of protection as well. Often, chrome plating is applied to metal objects when there is an increased opportunity for corrosion to occur.

Some of the advantages of chrome plating are:

- Repair worn parts
- Increase the life of new parts
- Prevent rust and corrosion
- Add durability to cast iron
- Allow use of less expensive base materials





Electroplating & Buffing

Galvanizing

Hot Dip Galvanizing is a cost-effective simple process of corrosion protection consisting of dipping steel into a bath of molten zinc to produce a non-oxidizing zinc-iron alloy layer on the surface. It is probably the most economic, efficient and pollution-free process available to protect steel against corrosion.

The layers can actually be harder than mild steel, which gives the total coating a very tough and durable finish.

Services:

- Jig Dipping- suitable for aerials, grilles and other similar items
- Hand-dipping- especially suitable for cleaning of threads
- Chain dipping- where the chain is put through the bath and is run through a machine that ensures links are loose and dag free.
- Dipping all fabricated steel-construction brackets, fence panels, gates

Bath Dimension:

Length 3.3m X Depth 1.5m X Width 1.0m





Electroplating & Buffing

Buffing & Polishing

Buff polishing creates a smooth near-mirror uniform surface for decorative parts. Polishing is done on the edge of a cloth buff wheel, typically about 6" diameter and hence the process can only reach certain surfaces. Edges often become slightly rounded. Buff polishing may not be effective on parts with sharp, intricate, recessed or fragile features.

Many material can be buff polished including:

- Aluminum
- Stainless Steel
- Copper
- Steel
- Acrylic
- Brass
- Titanium
- Sterling Silver
- Bronze



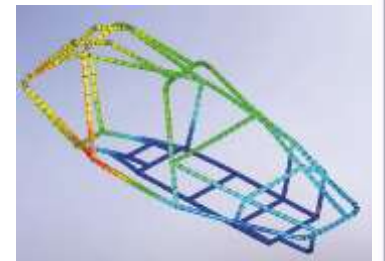
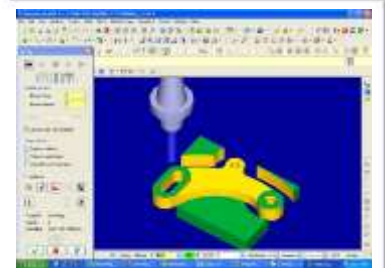


Design

With our innovative method, we can help you to reduce your concept-to-launch time and develop modern products for an ever changing market. Our mechanical design solutions will provide your company with faster product delivery and overall management of your entire application infrastructure. Our mechanical CAD design solutions are designed to help you adapt quickly to individual customer preferences and shorten production time, while maximizing your revenue. We can help you reduce operating costs, improve product time to market, develop better, more innovative and personalized products.

Expertise Available:

CAD	CAM
<ul style="list-style-type: none">• Solidworks• Autocad• Autodesk 3D max	<ul style="list-style-type: none">• Mastercam• Powermill



Al Chishty Engineering Works LLC



RAK

Location Map

Google maps

N25.819224, E55.992355



GPS Location: N25.819224,
E55.992355

Al Chishty Engineering Works LLC
Rams Road, Al Shamal
P.O.Box: 10285
Ras Al Khaimah
United Arab Emirates
E-mail - engineering@alchishty.com
www.alchishty.com

**For more information
Please visit our website
or call us at
+971-7-2237961**